



Keep your engine fleet always up to date

GCS-E Pro+ Subscription

GCS-E reduces complexity at competitive integration costs

At Guascor Energy, we always go one step further to offer the best products and services to our clients. That is why we introduced our own Control System GCS-E to all our engines.

The GCS-E control system is the brain of the engine; it is the one that tells the engine what to do, when, and how to ensure the best performance and completely safe operation. It comprises the entire engine parameters control, alarms management, and includes unique diagnostics and trending software. The GCS-E is the foundation that, when combined with the RCS service, will enhance your engine fleet operation.

Why GCS-E?

Great performance at different conditions

The GCS-E governs the engine unit. It is a Plug & Play autonomous engine control that simplifies installation and commissioning

The engine control, GCS-E, captures parameters such as ignition, ignition and timing; emissions control, knock detection, carburetion, speed/load control, protections, pre-lubrication/start-up or preheating (water/oil).

The advantages of this new control include a greater stability of emissions over time, improved start-up and service times due to the possibility of self-carburation, improved engine operation by ensuring correct carburetion and of course improved diagnosis and protection by using the NOx signals.

The specific maintenance schedule for this product guarantees competitive life cycle costs and ensures high operational availability.

Discover our new solution: GCS-E Pro+ Subscription

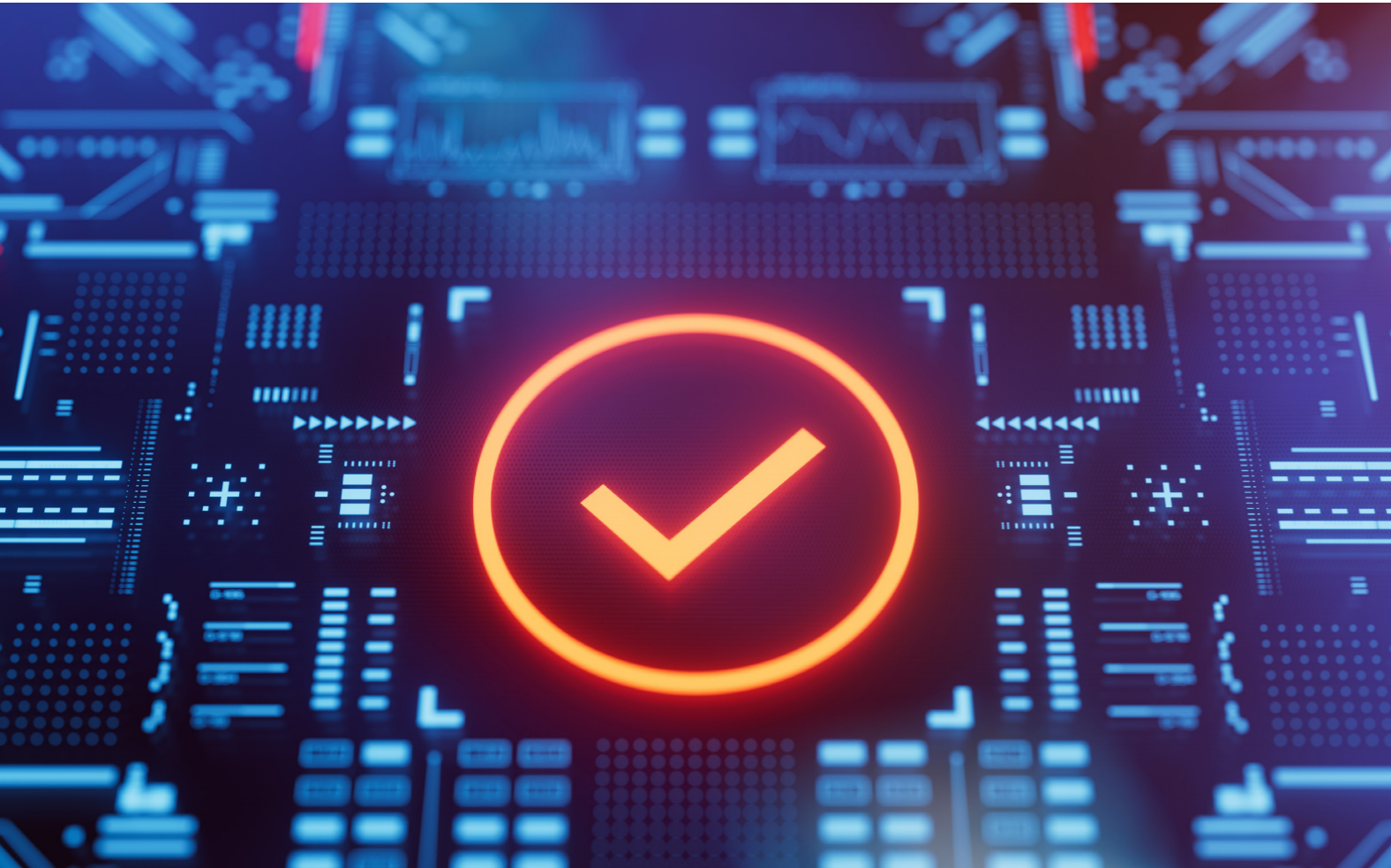
Our commitment is to design and manufacture robust and high performance engines & gen-sets, with a low life-cycle cost focus and in compliance with the strictest environmental requirements.

Now we want to go one step further by offering a solution that also allows you to keep your engine fleet updated according to the latest firmware updates.

With our **GCS-E Pro+ Subscription** you will have...

- **Receive the new releases** with added features and enhancements.
- **Interactive online session** with the control team where we walk you through the latest firmware release, highlighting the new features and additional enhancements. Your feedback is invaluable to us as we strive for continuous improvement
- **Delivery of firmware** and base settings for the engines in order to upgrade your fleet
- **Delivery of new technical documentation (IPs)** that are affected by the changes.
- **If you always keep your fleet upgraded**, you will avoid situations of obsolescence or problems problems that had already been solved in new releases.

The GCS-E Pro+ subscription can enhance and complement your Remote Support Packages provided by our [RCS](#).



**Published by
Guascor Energy**

Oikia, 44
20759 Zumaia (Gipuzkoa) Spain PO Box 30
Tel: (Int'l +34) 943 86 52 00
Fax: (Int'l +34) 943 86 52 10

www.guascor-energy.com

Subject to changes and errors. The information given in this document only contains general descriptions and/or performance features which may not always specifically reflect those described, or which may undergo modification in the course of further development of the products. The requested performance features are binding only when they are expressly agreed upon in the concluded contract.

© Guascor Energy 2024

Guascor Energy is a trademark licensed by Guascor Energy S.A.U.

